



Loughborough
University

Joining the
Philanthropy, Alumni and
Supporter Engagement Team

Welcome

Loughborough is an exceptional University. More broadly, our excellent student experience, unparalleled sporting achievements, and commitment to change, allow us to offer something truly distinctive from that of other UK Universities.

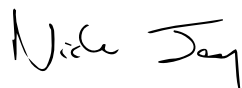
You will be joining Loughborough at an exciting time. Our new University Strategy; 'Creating Better Futures. Together.' is advancing our purpose, values and aims, offering a platform from which we can change the University for the better. Integral to this, we continue to make significant steps towards being a proactively equitable, diverse and inclusive University.

A key priority of our strategy is to continue to build a vibrant and inclusive global network of alumni who can play a pivotal role in achieving our ambitions - enhancing our reputation for research and innovation, education and student experience, and building strategic collaborations with high quality partners. Our alumni have a wealth of expertise and we work with them to give back to the university as experts, advocates, employers and donors. In return we aim to provide a strong alumni offering that develops their relationship with us long after graduation.

As a University Leadership Team, we are committed to investing in the growth of our Philanthropy, Alumni and Supporter Engagement Team to support them in raising the significant philanthropic income that is integral to the delivery of the University's ambitions.

The Team will be vital to the University's future success, and we are looking for talented individuals to join our talented team. If you are great at working with people, are motivated, passionate, collaborative and inclusive, we'd like to hear from you.

Thank you for considering the opportunity to become part of something special as we start to make a significant step change in our philanthropic endeavours at Loughborough.

A handwritten signature in black ink, reading 'Nick Jennings'.

Professor Nick Jennings CB FREng FRS
Vice-Chancellor and President



Loughborough University

Loughborough is an exceptional university. During uncertain times for higher education, and whilst others scramble for the safety of the pack, we are proud to be different. The combination of our excellent student experience, enterprising outlook, world class research and unparalleled sporting success gives rise to something that's truly special and distinctive amongst the UK's universities.

It's not just what we do that makes Loughborough special, it's our focus and our spirit. We are deeply competitive but committed to partnership working. We are determined to succeed and to motivate everyone to be the best they can be.

Loughborough's sense of community runs deep: it's in our DNA. We value our unique identity and our sector-leading work on diversity and inclusion. We are hugely successful and unafraid of innovation; a learning organisation that pushes boundaries.

Our origins in 1909, as one of the UK's foremost technical institutes focused on meeting society's needs, set in train an ethos that is still evident. Today the #LboroFamily comprises over 3,500 colleagues and more than 19,400 students. We are overwhelmingly proud of them and all they achieve. From our 523-acre campus in the East Midlands and our London campus at the Queen Elizabeth Olympic Park, we operate an endeavour with an annual turnover of more than £325m.

The team

Led by the Director of Philanthropy, Alumni and Supporter Engagement, the team sits within Marketing and Advancement and is currently made up of three key sub-teams, who work collectively to achieve shared objectives;

Development Operations

- Prospect Research
- Stewardship
- Data and Insight management
- Finance processing

Alumni and Supporter Engagement

- Communications and Campaigns
- Volunteering
- International
- Alumni Advisory Board

Philanthropy and Partnerships

- Leadership Giving
- Major Gifts – Individuals
- Major Gifts – Trust and Foundations
- Principal Gift fundraising

The team has been transformed in recent years and has developed into consistent and reliable team with a strong reputation. We pride ourselves on working to a set of team behaviours, created by the team, for the team, which enable us to work in a caring, supportive but driven environment.

With the launch of the new University Strategy, comes ambitious plans for growth. We will be recruiting many new roles across the whole team to help us deliver our plans.



Our people

Life at Loughborough has a strong community feel. It is a factor we pride ourselves on.

Our students, graduates, staff and campus based partners are at the heart of all that we do.

Within this close-knit community, there is a shared atmosphere of determination, community, and a will to succeed. It is an environment that involves and motivates everyone to be the best they can be.

Our students

Student numbers 2022/23 UK/EU and international

Undergraduate	15,191
Postgraduate taught	3,025
Postgraduate research	1,247
Further education	114
Other (including temporary exchange and staff research)	190

Our alumni

Loughborough University has a global community of over 200,000 graduates.

Over £6.1 million has been donated by alumni and friends of the University over the last three years.



over

27,000

applications were made for around 3,800 undergraduate places for 2022/23



More than

19,700

students from over 135 different countries



over

3,750

of our students on campus are international

Our staff

Staff numbers (Dec 2022)

Administrative, management and specialist staff	1,315
Researching, teaching, enterprise, specialist and supporting academic	1,365
Operational and technical staff	965

We have over 3,600 members of staff. 17% of our employee numbers are represented by international members of staff, covering over 75 different nationalities



over

3,500

staff, Loughborough's biggest employer



We have received the

**Race Equality Charter
Bronze Award**

that recognises we are beginning our journey to advance race equality.

Our collaborations

The University works with organisations worldwide, exchanging knowledge to drive innovation, boost performance and meet current and future challenges.

Our strategic collaborations include

Advanced Technology Innovation Centre (ATIC)
www.lusep.co.uk/atic

Caterpillar Innovation and Research Centre
www.lboro.ac.uk/caterpillar-irc

Leicester Biomedical Research Centre
www.leicesterbrc.nihr.ac.uk

National Centre for Sport and Exercise Medicine
www.ncsem-em.org.uk

Rolls-Royce University Technology Centre
www.lboro.ac.uk/rolls-royce-utc

SportPark
www.LUSEP.co.uk/sport-park

The Manufacturing Technology Centre (MTC)
www.the-mtc.org

National Football League Academy
www.nflacademy.com

West Ham United Women
www.whufc.com



Over 90 tenant partners are based on Loughborough University Science and Enterprise Park (LUSEP)

Our achievements

We successfully combine a world leading research endeavour with arguably the UK's best student experience. We are home to the worlds leading academic lead elite sport ecosystem, as well an outstanding estate and innovative enterprise work.



OUR LONDON CAMPUS

OPENED IN 2015
AND IS HOME TO OVER
800 POSTGRADATES



**4TH IN ENGLAND
FOR OVERALL
SATISFACTION**
NATIONAL STUDENT
SURVEY 2022



**LSU ACTION
AWARDED QUEEN'S
PLATINUM
JUBILEE AWARD**
FOR SUPPORTING LOCAL
COMMUNITY (2022)



**BRITISH UNIVERSITY
AND COLLEGE
SPORT CHAMPIONS**
**41 YEARS
IN A ROW**



**AWARDED
SEVEN QUEEN'S
ANNIVERSARY
PRIZES**
FOR THE QUALITY OF
OUR RESEARCH



**GREEN FLAG AWARDS
SINCE 2018**
**ONE OF THE
NATION'S BEST
GREEN SPACES**



INTERNATIONAL QS
STARS SCHEME 2020
**FIVE STARS PLUS
INSTITUTION**
– ONE OF ONLY
13 WORLDWIDE



QS WORLD
UNIVERSITY RANKINGS
BY SUBJECT 2023
**BEST UNIVERSITY
IN THE WORLD FOR
SPORTS-RELATED
SUBJECTS**



**RAISED THROUGH
LSU RAG
SINCE RECORDS
BEGAN**



**UNIVERSITY OF THE
YEAR FOR SPORT**
THE TIMES AND SUNDAY
TIMES GOOD UNIVERSITY
GUIDE 2022



WHATUNI STUDENT
CHOICE AWARDS 2022
**1ST FOR
UNIVERSITY
FACILITIES**



THE COMPLETE
UNIVERSITY GUIDE 2023
RANKED 7TH
OUT OF 130 UK
UNIVERSITIES



Our staff networks

The University has a number of [staff networks](#) which enable colleagues to support each other, discuss issues within our community and wider society, and contribute to future strategic developments at the University.

Age Appreciation Group

Open to staff of any age, the group champions age diversity. The Group aims to promote the University as a great place to work for all ages.

Black, Asian and Ethnic Minority (BAME) Network

The group raises awareness of race and cultural issues and is a forum to raise the profile of black and ethnic minority cultures on campus.

Staff Inclusivity Group

The Staff Inclusivity Group is committed to achieving equality for all those who work across both campuses. We aim to ensure that the University demonstrates a fair and supportive environment which provides equality of opportunity and freedom from unlawful discrimination on the grounds of disability, including mental health difficulties and neurodivergent differences.

We are proud to support our diverse community and wish to encourage and celebrate its full contribution to a University life where all colleagues are treated equally and with respect.

Part-time Staff Group

An informal support network for people who currently work flexibly or on a part time basis, or who would like to do so in the future.

LGBT+ Staff Network

The LGBT+ Staff Network encompasses staff that identify as LGBT+ and those who are allies. The Network has monthly meetings where staff highlight LGBT+-related issues, organise events and campaigns for awareness and celebration, and offer a space to ensure that LGBT+ staff are represented, supported, valued and have a structure through which they can instigate change. Our current priorities are to: work with colleagues to facilitate a systemic and structured audit of LU structures, processes and experience of LGBT+ staff (Stonewall Workplace Equality Index); implement recommendations from the audit; and create and publicised proactive policies for trans and non-binary staff.

Maia

Maia is the Loughborough University Women's Network. Maia unites women staff and Doctoral Researchers, including trans women and non-binary people comfortable in a female-centred community, across Schools, Professional Services and Loughborough Students' Union. Maia seeks to make change happen across the University by providing an inclusive community and networking opportunities, creating meaningful, events and initiatives, and delivering and advocating for change to progress gender equity at Loughborough.

International Staff Group

The network supports the development of a fair and supportive environment that provides equality of opportunity and freedom to international staff.

Working Parents and Carers' Network

For all staff who have, or who have had, parental or caring responsibilities, this network provides a forum for support, sharing experiences and raising issues relevant to working families. We are an informal group which aims to offer a community for working parents and carers, and which also seeks to influence university policies and practices which impact on our members.

Armed Forces Network Group

Open to those staff, and their family members, who have served in the Armed Forces. The University is a signatory to the Armed forces Covenant and has pledged to treat with fairness and respect those who serve or who have served in the Armed Forces, and their families. Our Armed Forces Network provides a forum and support group for staff and students who are Military Reservists, Veterans and their family members. The University promotes itself as an armed forces institution with HR policies that support the recruitment of veterans and their families. Our contribution was recognised with a Silver award in the 2021 Defence Employer Recognition Scheme.





We have

A distinctive international reputation for excellence

The relevance of our research to real-life issues places us at the forefront internationally, increasing significantly the global visibility and reputation of the University. Our contribution, at the very highest levels, to new knowledge and understanding boosts our links with some of the best universities in the world and expands our breadth of well-established partnerships with leading international companies.

A life-shaping student experience

We provide our students with an exceptional learning environment that offers outstanding, innovative teaching, opportunities to contribute to pioneering research, and options to maximise their business potential, coupled with wide-ranging personal support. We engage with our students to ensure we deliver the best possible academic experience. There is high demand for our programmes and we deliver outstanding levels of student satisfaction.

Working in partnership with Loughborough Students' Union, we offer the best possible all-round experience, providing our students with a wide range of opportunities that enable them to achieve their full potential, professionally and personally as well as academically.

Outstanding partnerships to deliver social, economic and cultural prosperity

We pursue the commercial potential of our research and forge productive, collaborative links with partners across all sectors. We will meet their requirements and our activities help support economic development and drive innovation and performance locally, nationally and internationally.

We work closely with local partners to enhance the social, cultural and economic wellbeing of the communities and region in which we reside. We embed sustainability and social responsibility into all of our processes, operations and developments.

A culture of delivering excellence in all that we do

Through the integration of influential research, a vibrant enterprising culture and outstanding learning opportunities, we enhance our ability to drive forward solutions to contemporary global challenges.

We support staff to attain the highest standards and our international profile attracts the very best in their fields.

We have cemented our position as the UK's premier university for sport and are recognised globally for our unique ability to shape sport and exercise policy and practice both nationally and internationally.

One outstanding university: two vibrant campuses

Our distinctive ability to integrate research, teaching and enterprise has strengthened the activities in which we excel and created new capacity in areas of excellence.

Our international ambitions are being enhanced through a thriving postgraduate campus on the Queen Elizabeth Olympic Park in London, complementing our outstanding green-field campus in Loughborough and creating distinct campus communities, that share a common ethos, purpose and values.

University governance

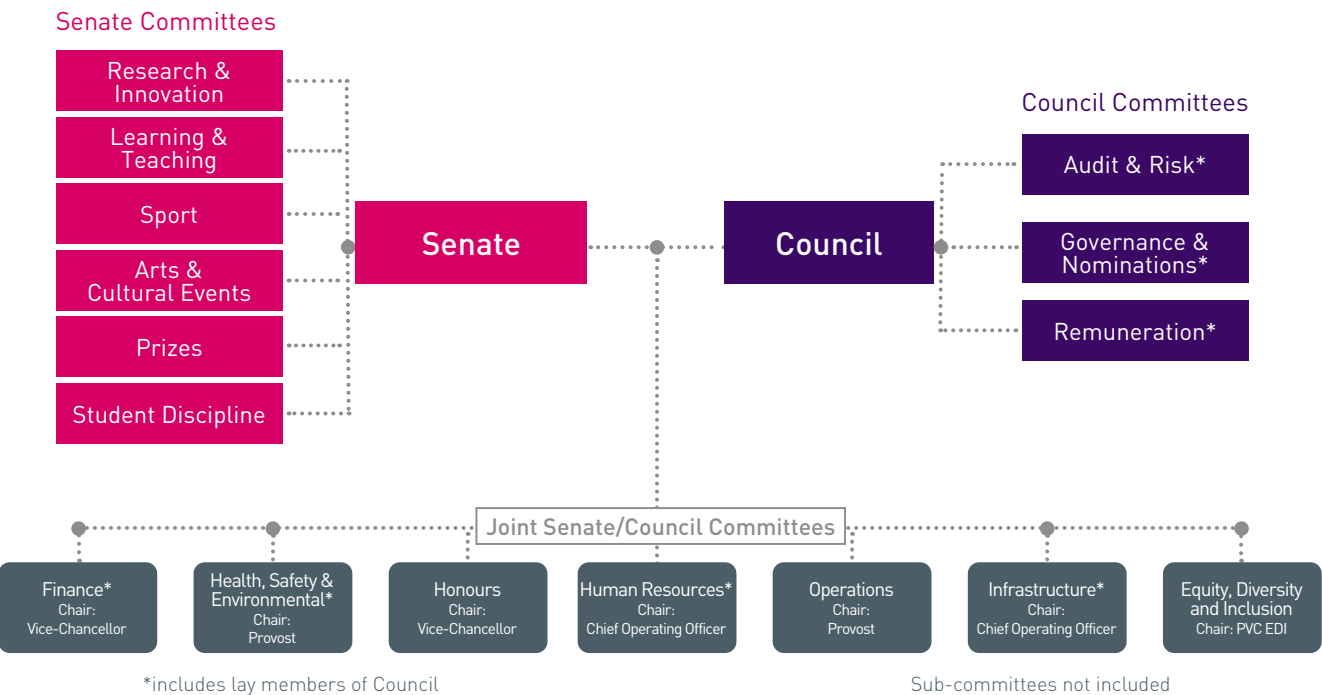
The University Senate

The University Senate is responsible for the academic work of the University, including programmes, examinations, teaching and research quality. Its membership is drawn from the University.

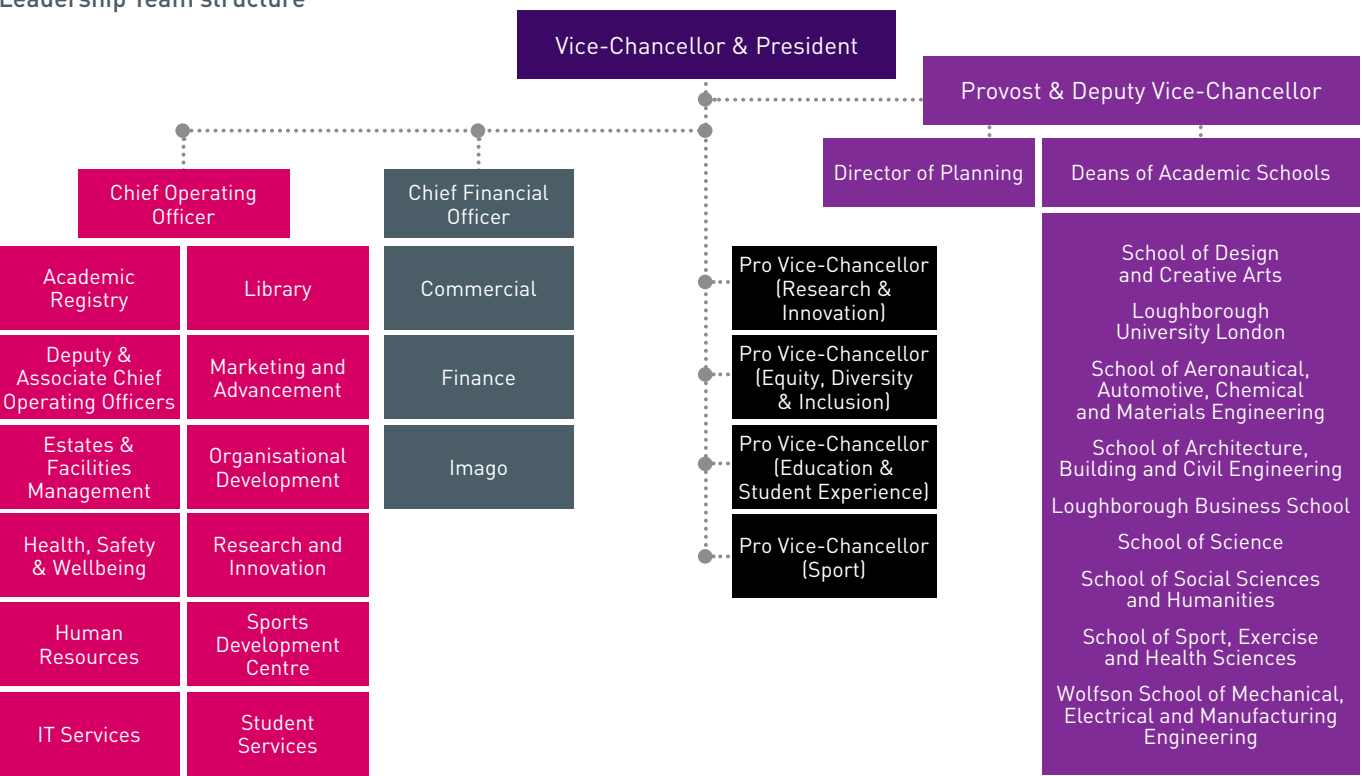
The University Council

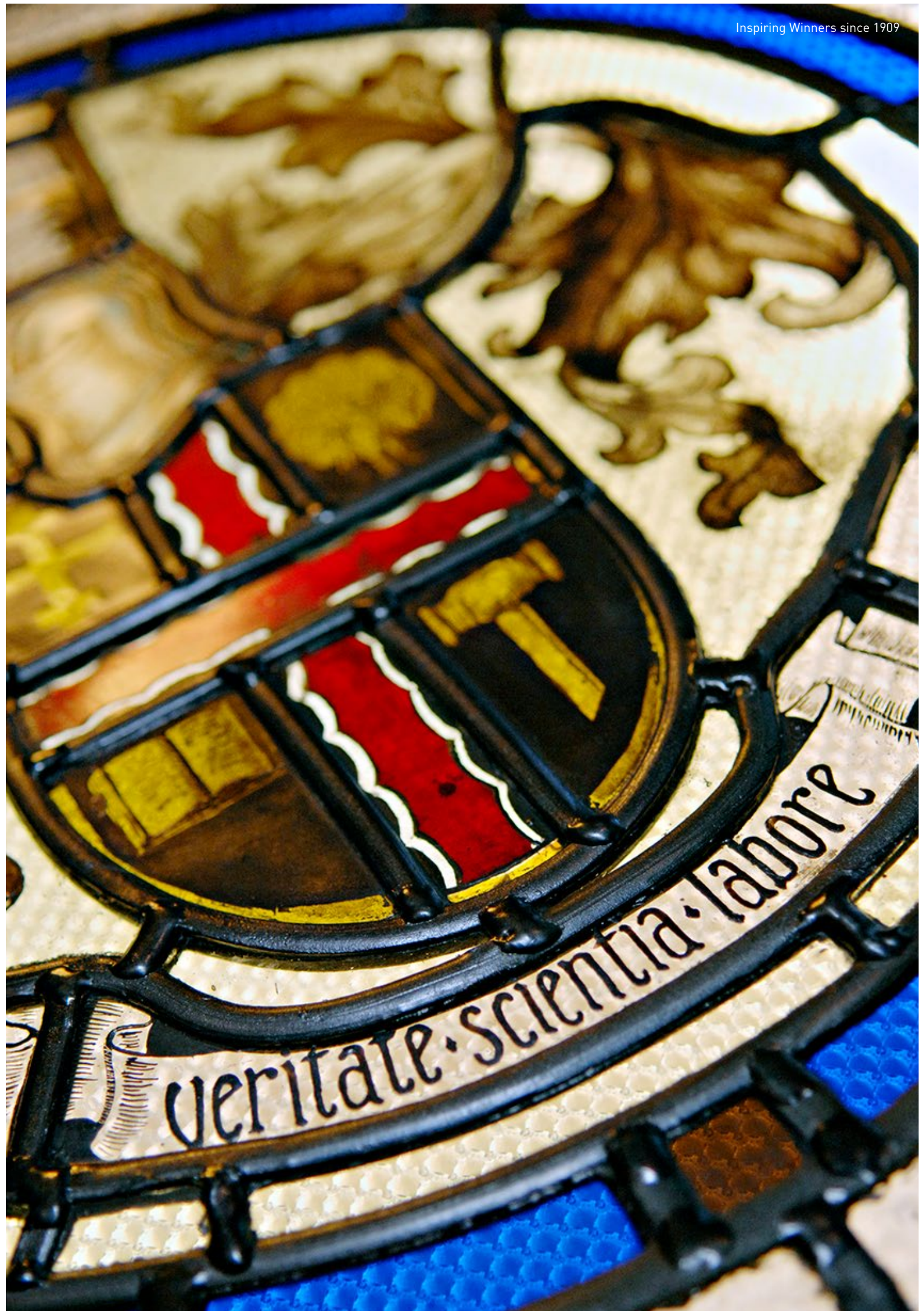
The University Council is the governing body, responsible for the University's finances, buildings and land. It is the official employer of all staff and meets several times a year. Its Chair is the Senior Pro Chancellor, Christine Hodgson CBE.

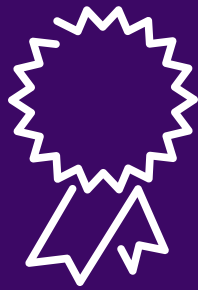
Senate & Council structure



Leadership Team structure







RANKED 7TH
IN THE COMPLETE UNIVERSITY
GUIDE 2023, OUT OF 130 UK
UNIVERSITIES